



Customer information packet

ECTM4308T-G

40HP, 1190RPM, 3PH, 60HZ, 364T, A36062M, TEFC

Class - None

Division - Not Applicable

Specifications

Enclosure	TEFC
Frame	364T
Frame Material	Iron
Frequency	60.00 Hz
Motor Letter Type	Three Phase
Output @ Frequency	40.000 HP @ 60 HZ
Phase	3
Synchronous Speed @ Frequency	1200 RPM @ 60 HZ
Voltage @ Frequency	230.0 V @ 60 HZ 460.0 V @ 60 HZ
XP Class and Group	None
XP Division	Not Applicable
Agency Approvals	CCSAUSEEV
Ambient Temperature	40 °C
Auxillary Box	No Auxillary Box
Base Indicator	Rigid
Bearing Grease Type	Polyrex EM (-20F +300F)
Current @ Voltage	107.000 A @ 208.0 V 49.800 A @ 460.0 V 99.600 A @ 230.0 V
Design Code	B
Drip Cover	No Drip Cover
Duty Rating	CONT
Efficiency @ 100% Load	94.1 %
Feedback Device	NO FEEDBACK
Heater Indicator	Heater Included, 115 V
High Voltage Full Load Amps	49.8 a
Insulation Class	F
Inverter Code	Inverter Ready
KVA Code	G
Lifting Lugs	Standard Lifting Lugs
Motor Lead Quantity/Wire Size	3 @ 4 AWG

Part detail

Revision	B
Type	AC
Mech. spec.	
Base	
Status	PRD/A
Elec. spec.	A36WG1194
Layout	617438-196
Eff. date	06-06-2023
CD Diagram	416820-002
Poles	06
Leads	3#4,6#6
Proprietary	False
Created date	04-07-2022

Motor Standards	NEMA
Motor Type	A36062M
Mounting Arrangement	F1
Number of Poles	6
Overall Length	33.78 IN
Power Factor	80
Product Family	Cooling Tower
Pulley End Bearing Type	Ball
Pulley Face Code	Standard
Service Factor	1.15
Shaft Diameter	2.374 IN
Shaft Ground Indicator	Shaft Grounding
Shaft Rotation	Reversible
Shaft Slinger Indicator	Shaft Slinger
Speed	1190 rpm
Speed Code	Single Speed
Starting Method	Direct on line
Thermal Device - Bearing	None
Thermal Device - Winding	None

Nameplate

000613007EW

CAT.NO.	ECTM4308T-G		SPEC NO.	A36-7949-1194					
HP	40HP	AMPS	99.6/49.8	VOLTS	230/460	DESIGN	B		
FRAME	364T	RPM	1190	HZ	60	AMB	40	SF	1.15
DRIVE END BEARING	65BC03JGG30A		PH	3	DUTY	CONT	INSUL.CLASS	F	
OPP D.E. BEARING	65BC03JGG30A		TYPE	P	ENCL	TEFC	CODE	G	
D.E.BRG.DATA	6313		POWER FACTOR	80		NEMA NOM EFFICIENCY	94.1		
O.D.E.BRG.DATA	6313		MAX CORR KVAR	12.00		GUARANTEED EFFICIENCY	93		
3/4 LOAD EFF.	94.1		NEMA NOM/CSA QUOTED EFF						
SER.NO.			MOTOR WEIGHT						

000901002AAA

INV DUTY 20:1 VT

AC induction motor performance data

Record #93159 - Typical performance - not guaranteed values

Winding	A36WG1194
Type	A3662M
Enclosure	TEFC

Nameplate data

Rated Output			40
Volts			230/460
Full Load Amps			99.6/49.8
R.P.M.			1190
Hz	60	Phase	3
KVA Code			G
S.F.			1.15
NEMA Nom. Eff.	94.1	Power Factor	80
Duty			CONT
S.F. Amps			

460 V, 60 Hz:

High Voltage Connection

Full Load Torque	176.8 LB-FT
Start Configuration	direct on line
Breakdown Torque	514 LB-FT
Pull-up Torque	266 LB-FT
Locked-rotor Torque	335 LB-FT
Starting Current	312 A
No-load Current	18.7
Line-line Res. @ 25°C	0.14922 Ω
Temp. Rise @ Rated Load	43°C
Temp. Rise @ S.F. Load	51°C
Locked-rotor Power Factor	25.4
Rotor inertia	0

Load Characteristics 460 V, 60 Hz, 40 HP

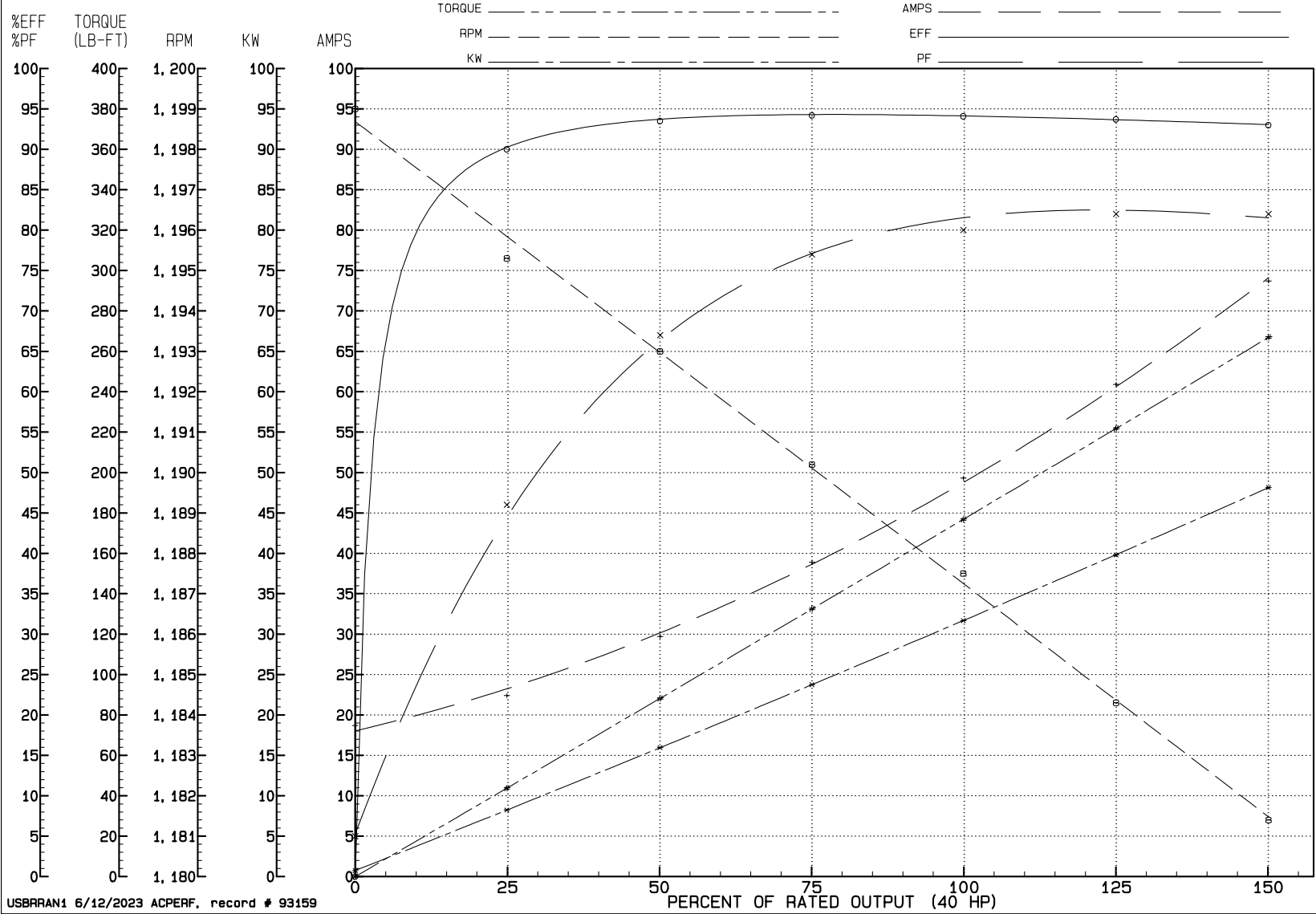
% of Rated Load	NL	25	50	75	100	125	150	SF
Power Factor	5	46	67	77	80	82	82	81
Efficiency	0	90	93.5	94.2	94.1	93.7	93	93.9
Speed	1199	1195.3	1193	1190.2	1187.5	1184.3	1181.4	1186
Line amperes	18.7	22.4	29.7	38.9	49.3	60.9	73.7	56.3

REVIEW

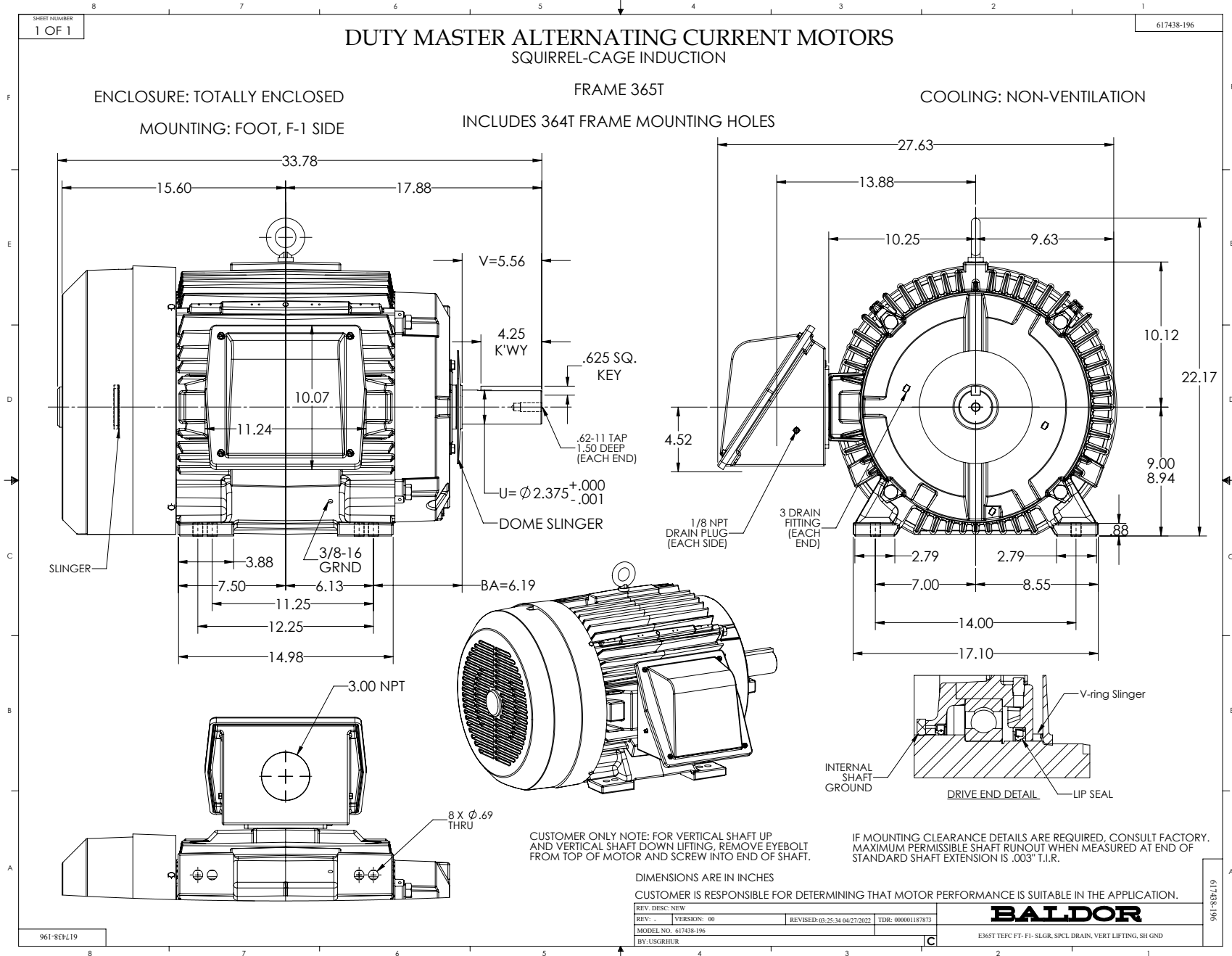
WINDING # A36WG1194

40 HP 3 PH 60 HZ 1190 RPM 460 V A3662M

TORQUES (LB-FT): P0=514.00 PU=266.00 LR=335.00 LRA=312.00

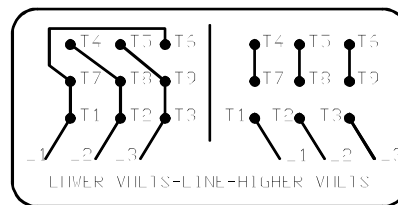
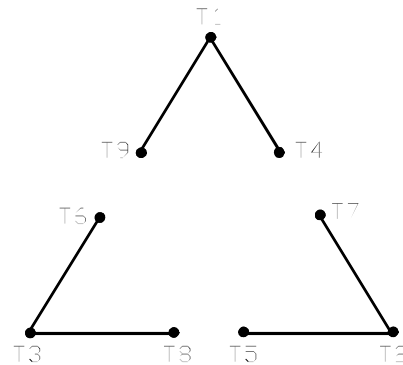


USBRRAN1 6/12/2023 ACPERF, record # 93159



416820-002

A-C MOTOR
 CONNECTION DIAGRAM
 STANDARD 9 LEAD DELTA-CONNECTED



(N.P. 1575-B)

416820-002

REV. DESC: FONT CHANGE FOR PDF SEARCHABLE		
REV. LTR: A	VERSION: 01	TDR: 000001009382
FILE: \MGA\00000\661	REVISED: 02:46:19 02/13/2020	BY: MGHMTT
MTL: -	© □	

BALDOR - RELIANCE®

CONN DIAG - STANDARD 9 LEAD, DELTA-CONNECTED

SH 1 of 1